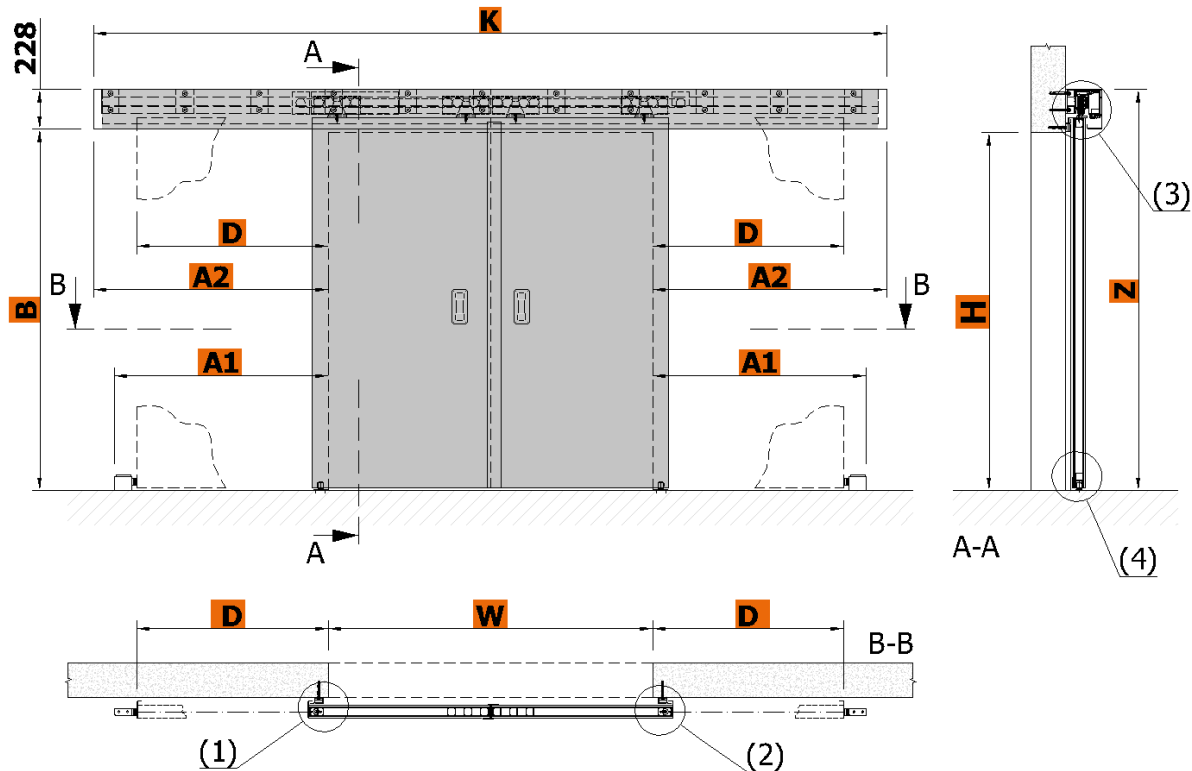




## TECHNICAL DATA SHEET SINGLE LEAF SLIDING FIRE GATES SGS-Dynamic (1+1) EI 60/EW 90 (Sa/S200)

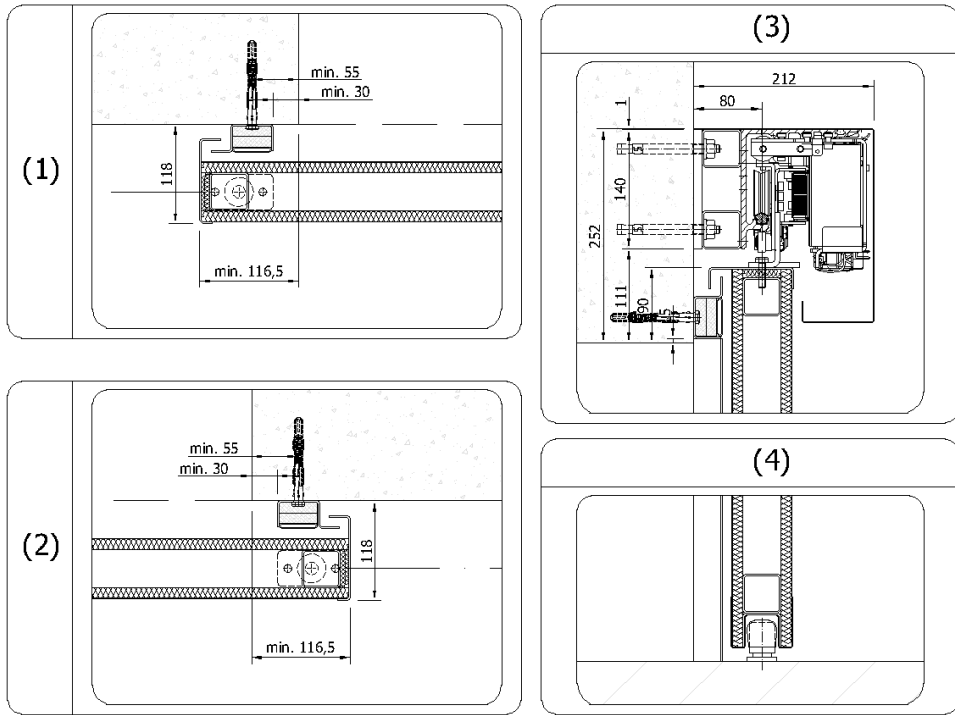
Technical data sheets serve to determine the basic space requirements of sliding fire gates. Other dimensions or atypical demands can be solved upon request.

### SGS-Dynamic (1+1) EI 60/EW 90

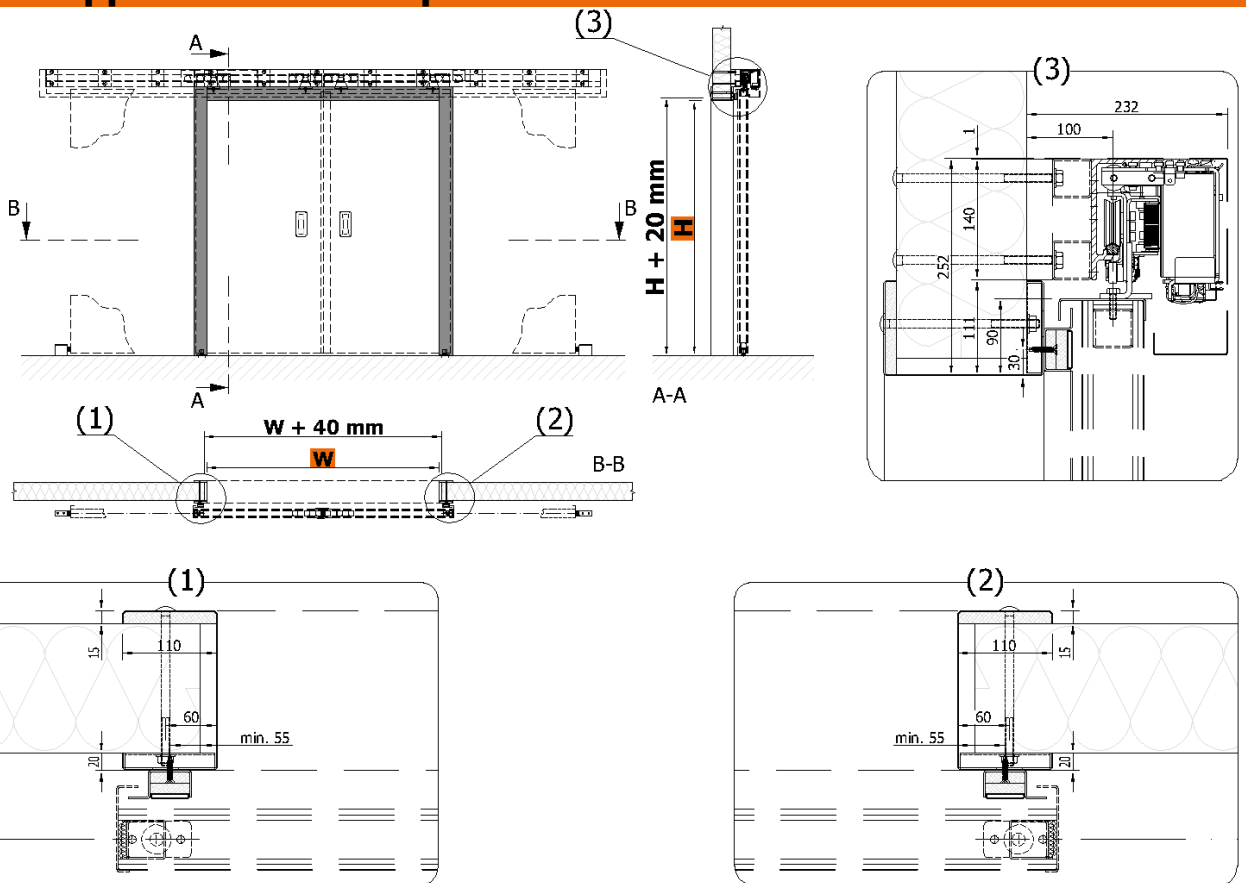


		2301	2401
<b>W</b>	opening width [mm] *	= 1400 ÷ 3000 (MAX. 2,25 m <sup>2</sup> )	1600 ÷ 3000 (MAX. 8 m <sup>2</sup> )
<b>H</b>	opening height [mm]	= 1900 ÷ 2500	1900 ÷ 3500
<b>D</b>	gate range	= W/2 + min. 95 mm	
<b>A1</b>	floor stop	= D + 130 mm	
<b>A2</b>	overlap from edge of opening	= D + min. 250 mm	
<b>K</b>	length of drive unit	= D + W + A2	
<b>B</b>	bottom edge of covering	= H + 24 mm	
<b>Z</b>	overall height	= H + 255 mm	

\* Other dimensions on request after consultation with the producer.



Can be applied to the wall panel



Construction readiness of the opening is secured by the customer according to the requirements of the contractor. It is necessary to respect the flatness of the wall and the floor with a tolerance of max. 3 mm/m.

Technical changes reserved.



Would you like to know more? Contact us.

Somati system s.r.o., Jihlavská 510/2c, 664 41 Troubsko  
 IČ: 29260159, DIČ: CZ29260159  
 www.somati-system.cz